

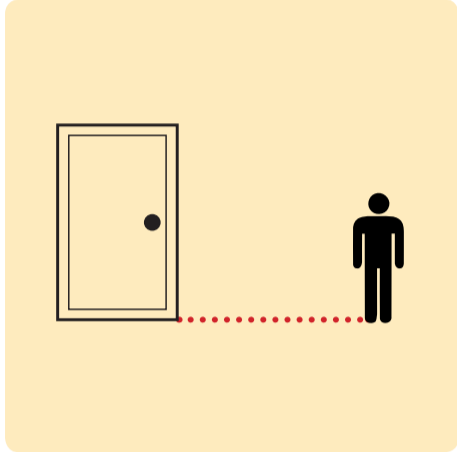
EARTHQUAKE SAFETY TIPS

DURING SHAKE

INDOOR

STAY AWAY

from heavy objects, windows, doors

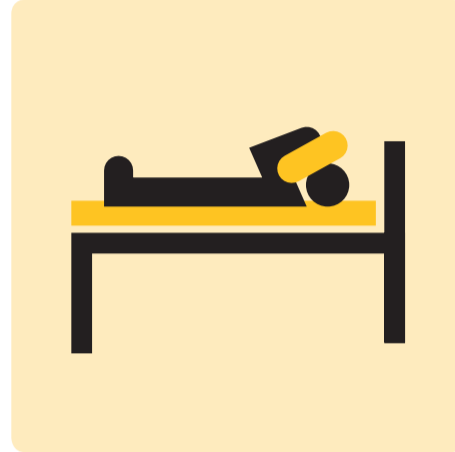


DROP / COVER / HOLD ON



IN BED

hold on & protect head with pillow



CHECK FOR SURE

that exit doors are open **GET OUT** when shaking stops



OUTDOOR

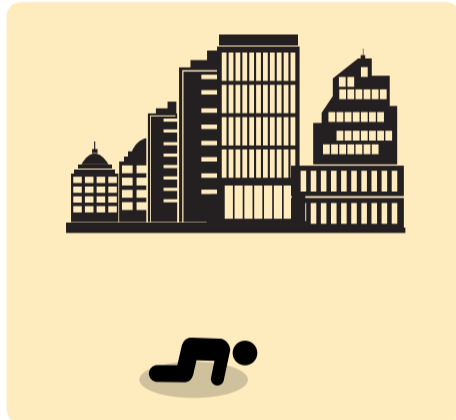
STAY AWAY

from trees, buildings, electrical lines, lights



DROP

on the clear ground until stop



IN CAR

STOP

set parking brake, stay inside



STAY AWAY

from buildings, trees, overpass, electrical lines



AFTER SHAKE

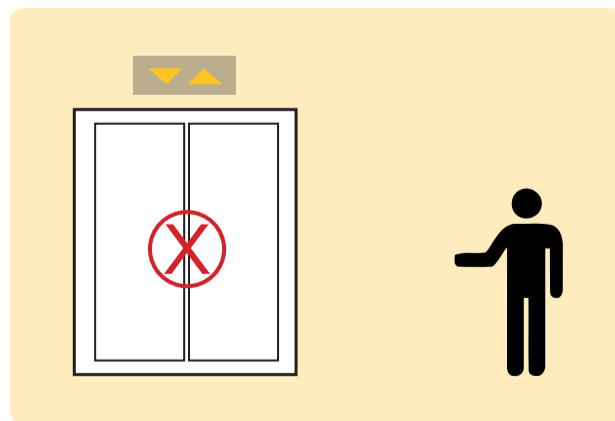
CHECK

- Injuries
- Water & electrical lines damage
- Fire
- Chemical, toxic spills



DON'T

- Panic.
- Use elevator.
- Go into damaged building.
- Use telephone unless necessary



BE CAREFUL

Expect AFTERSHOCKS

